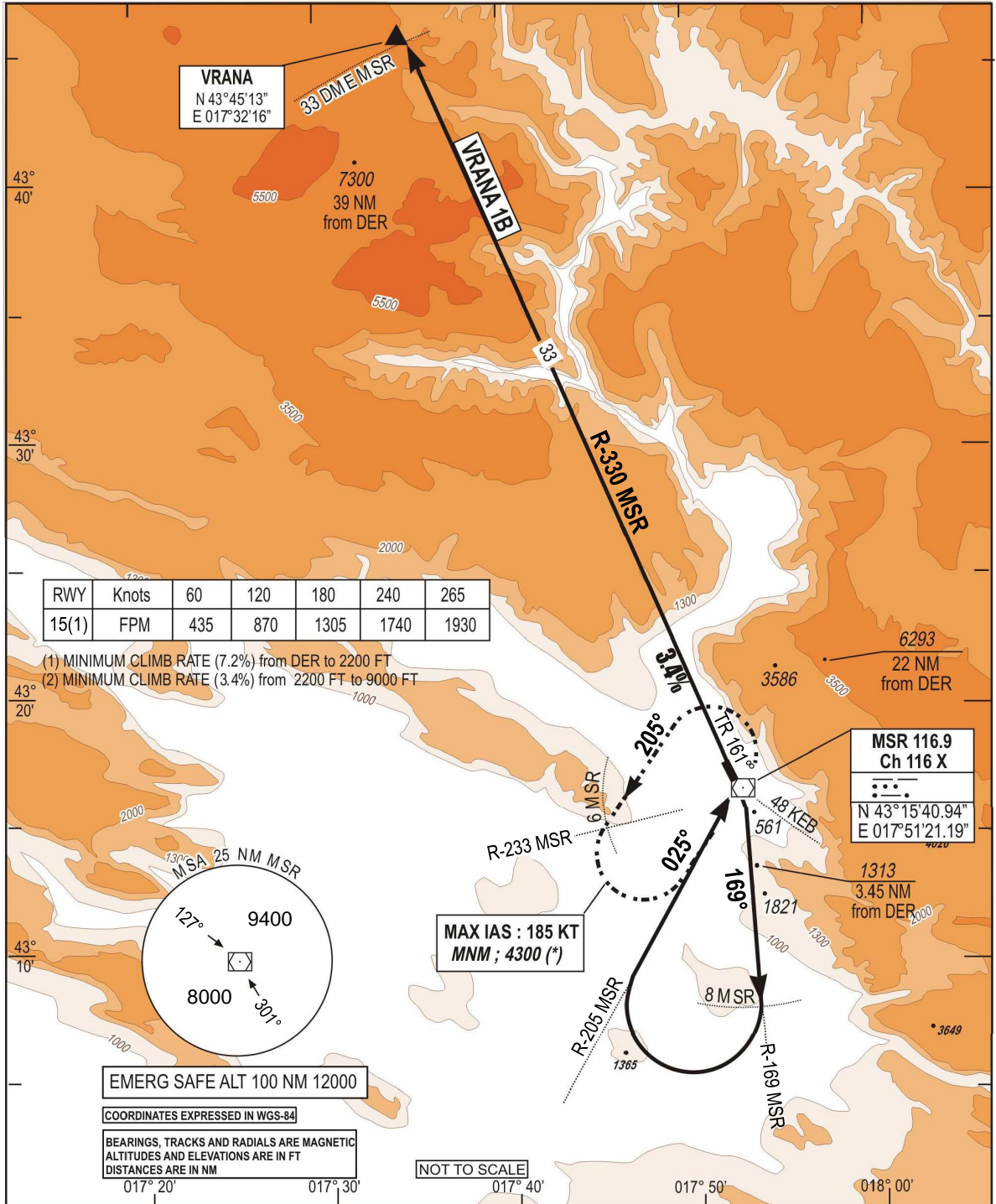


**STANDARD DEPARTURE CHART
INSTRUMENT (SID) - ICAO**

TRANSITION
ALTITUDE
10 000 FT
VAR 5°E (2020)

APP 120.225
129.875
TWR 125.550
ATIS 126.225

**MOSTAR (LQMO)
VRANA1B RWY 15**



CHG: MSA UPDATED

SID	DEPARTURE ROUTE DESCRIPTION
VRANA 1B (RWY 15)	<ul style="list-style-type: none"> - After DER, climb (1) TR 161°, then R-169 MSR - At 8.0 D MSR, turn right to intercept R-205 MSR inbound direct to MSR. - Over MSR, turn left to intercept R-330 MSR direct to VRANA - Then as directed by ATC <p>(1) Minimum climb rate 7.2% from DER to 2200 FT then 3.4% until 9000 FT (*) (*) Rescue pattern climb: Over 2200 FT, if minimum climb rate not possible above 2200 FT, climb standard rate 3.3% until MSR, then climb in holding pattern. At 9000 FT direct to VRANA. Separation with arrivals and holdings patterns not guaranteed.</p>

THIS PAGE INTENTIONALLY LEFT BLANK